



## **APPENDIX 9-3**

***PUBLIC LIGHTING REPORT***

**DATE:** 17 August 2022  
**DESIGNER:** Alex Naper  
**PROJECT No:** SES 11222 Rev B  
**PROJECT NAME:** Site B – Healthcare Facilities -Sky Castle Ltd.



Link road designed in accordance with EN13201-2:2015 category P2.

Distributor carriageway designed in accordance with EN13201-2:2015 Category M4. Distributor road a whole designed in accordance with EN13201-2:2015 Category P2.

Distributor road/Link road junction designed in accordance with EN13201-2:2015 Category C3.

Carpark designed in accordance with EN12464-2:2014 Table 5.9.1.

Internal road area designed in accordance with EN13201-2:2015 Category P3.

Rev A: Existing HID luminaires added.

## **Outdoor Lighting Report**

**PREPARED BY:** Sabre Electrical Services Ltd.  
Unit 11,  
Bellview Industrial Estate,  
Tolka Valley Road,  
Dublin 11  
Phone Number: 01 8110875  
Contact: Graham Sheehan  
eMail: graham@sabrelighting.ie

## Layout Report

### General Data

Dimensions in Metres Angles in Degrees

### Calculation Grids

ID	Grid Name	X	Y	X' Length	Y' Length	X' Spacing	Y' Spacing
1	Grid 1	694612.84	738506.27	122.73	354.59	1.50	1.50
2	Grid 2	694678.96	738789.75	39.00	48.00	1.50	1.50
3	Grid 3	694464.62	738844.77	220.48	78.00	1.50	1.50
4	Grid 4	694453.17	738841.42	125.71	66.00	1.50	1.50
5	Grid 5	694552.35	738726.50	102.00	117.00	1.50	1.50

### Luminaires

#### Luminaire B Data

Supplier	C U Phosco
Type	E950-28-P4A-730-C550-14W
Lamp(s)	730N
Lamp Flux (klm)	2.08
File Name	E950-28-P4A-730-C0550-14W.ies
Maintenance Factor	0.83
Imax70,80,90(cd/klm)	659.3, 183.1, 0.3
No. in Project	7



#### Luminaire F Data

Supplier	C U Phosco
Type	P863-128-R4-730-W3-300-40W
Lamp(s)	730SS
Lamp Flux (klm)	5.53
File Name	P863-128-R4-730-W3-300-40W.ies
Maintenance Factor	0.87
Imax70,80,90(cd/klm)	386.2, 27.2, 0.4
No. in Project	10



#### Luminaire G Data

Supplier	C U Phosco
Type	P862-256-R2E-730-W3-300-76W
Lamp(s)	730SS
Lamp Flux (klm)	10.70
File Name	P862-256-R2E-730-W3-300-76W.ies
Maintenance Factor	0.87
Imax70,80,90(cd/klm)	458.4, 47.0, 0.0
No. in Project	5

#### Luminaire H Data

Supplier	C U Phosco
Type	P863-128-F2B-730-W3-300-40W
Lamp(s)	730SS
Lamp Flux (klm)	5.39
File Name	P863-128-F2B-730-W3-300-40W.ies
Maintenance Factor	0.87
Imax70,80,90(cd/klm)	461.8, 61.8, 0.8
No. in Project	1



#### Luminaire I Data

Supplier	C U Phosco
Type	E950-28-A2A-730-SD0600-26W
Lamp(s)	730SA
Lamp Flux (klm)	3.59
File Name	E950-28-A2A-730-SD0600-26W.ies
Maintenance Factor	0.87
Imax70,80,90(cd/klm)	244.2, 25.7, 14.6
No. in Project	16

#### Luminaire J Data

Supplier	
Type	2685 SNN-1C#
Lamp(s)	1 ST 150 17500 2000 E40
LampFlux(klm)/Colour	17.50 1950 / 23
File Name	Arc 2685 SNN 1C# 1 ST 150 17500 1950 E 40.ltd
Maintenance Factor	0.75
Imax70,80,90(cd/klm)	352.0, 100.0, 5.0
No. in Project	5

**Layout**

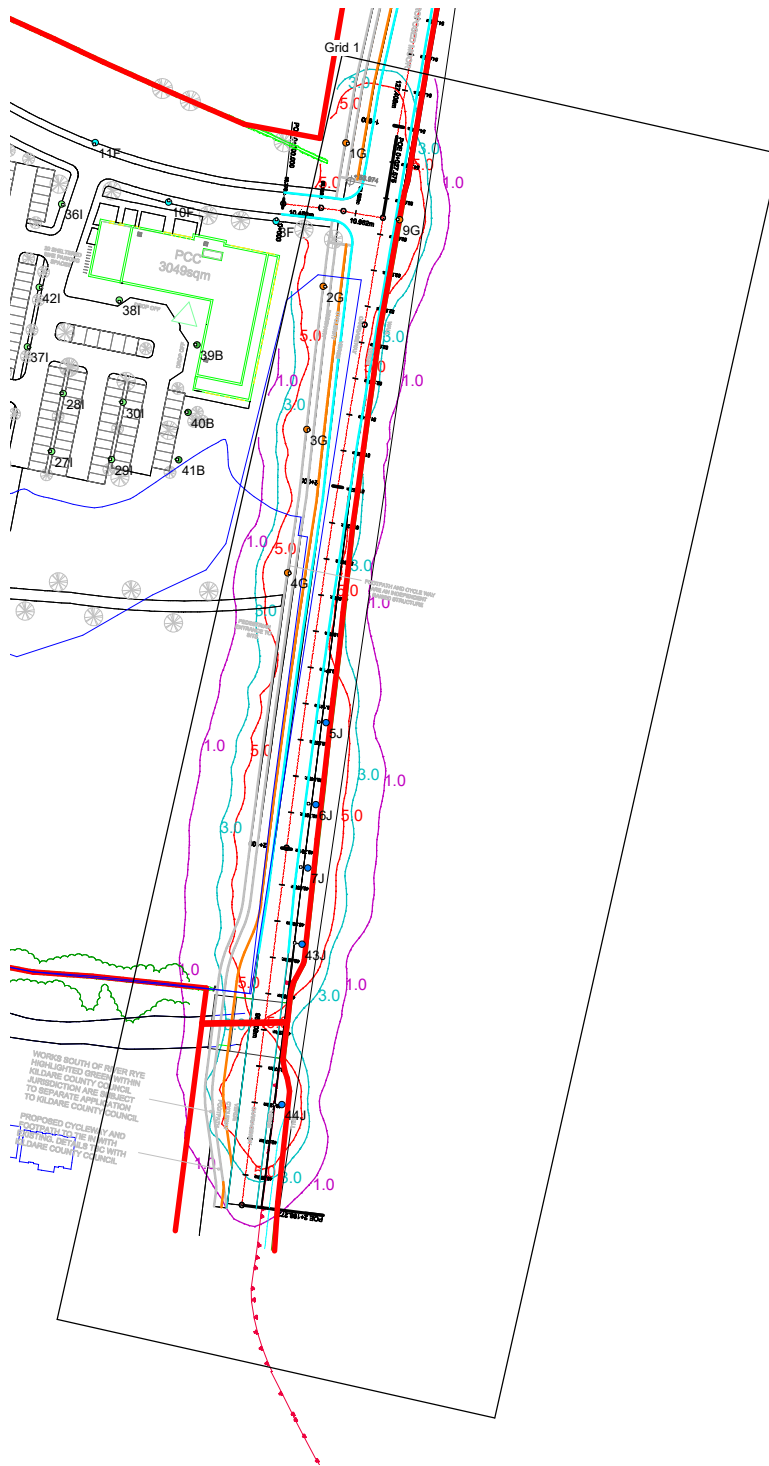
ID	Type	X	Y	Height	Angle	Tilt	Cant	Out-reach	Target X	Target Y	Target Z
1	G	694691.87	738828.14	10.00	349.00	0.00	0.00	0.50			
2	G	694685.67	738788.92	10.00	349.00	0.00	0.00	0.50			
3	G	694681.16	738749.74	10.00	349.00	0.00	0.00	0.50			
4	G	694675.90	738710.53	10.00	349.00	0.00	0.00	0.50			
5	J	694686.44	738669.51	10.00	174.00	5.00	0.00	2.00			
6	J	694683.59	738647.14	10.00	174.00	5.00	0.00	2.00			
7	J	694681.46	738629.80	10.00	174.00	5.00	0.00	2.00			
8	F	694672.79	738806.75	8.00	80.00	0.00	0.00	0.50			
9	G	694706.53	738807.16	10.00	173.00	0.00	0.00	0.50			
10	F	694643.33	738811.94	8.00	80.00	0.00	0.00	0.50			
11	F	694623.22	738828.28	8.00	245.00	0.00	0.00	0.50			
12	F	694598.06	738828.65	8.00	53.00	0.00	0.00	0.50			
13	F	694577.41	738852.91	8.00	243.00	0.00	0.00	0.50			
14	F	694548.68	738870.90	8.00	243.00	0.00	0.00	0.50			
15	F	694521.13	738876.44	8.00	63.00	0.00	0.00	0.50			
16	F	694484.80	738880.91	8.00	335.00	0.00	0.00	0.50			
17	F	694502.18	738899.80	8.00	243.00	0.00	0.00	0.50			
18	F	694473.40	738905.89	8.00	49.00	0.00	0.00	0.50			
19	H	694465.76	738855.20	8.00	24.00	0.00	0.00	0.50			
20	I	694527.36	738858.50	6.00	20.00	0.00	0.00	0.40			
21	I	694544.14	738845.07	6.00	63.00	0.00	0.00	0.40			
22	I	694595.02	738817.04	6.00	350.00	0.00	0.00	0.40			
23	I	694568.06	738833.79	6.00	63.00	0.00	0.00	0.40			
24	I	694589.94	738791.63	6.00	349.00	0.00	0.00	0.40			
25	I	694586.80	738776.35	6.00	346.00	0.00	0.00	0.40			
26	I	694581.33	738749.05	6.00	337.00	0.00	0.00	0.40			
27	I	694611.31	738743.73	6.00	165.00	0.00	0.00	0.40			
28	I	694614.50	738759.57	6.00	165.00	0.00	0.00	0.40			
29	I	694627.76	738741.54	6.00	165.00	0.00	0.00	0.40			
30	I	694630.86	738757.20	6.00	170.00	0.00	0.00	0.40			
31	B	694577.53	738821.33	6.00	346.00	0.00	0.00	0.40			
32	B	694573.59	738801.91	6.00	346.00	0.00	0.00	0.40			
33	B	694569.82	738782.58	6.00	346.00	0.00	0.00	0.40			
34	I	694599.13	738745.87	6.00	346.00	0.00	0.00	0.40			
35	B	694563.67	738753.40	6.00	347.00	0.00	0.00	0.40			
36	I	694614.09	738811.41	6.00	335.00	0.00	0.00	0.40			

**Layout Continued**

ID	Type	X	Y	Height	Angle	Tilt	Cant	Out-reach	Target X	Target Y	Target Z
37	I	694604.68	738772.38	6.00	348.00	0.00	0.00	0.40			
38	I	694629.86	738785.15	6.00	261.00	0.00	0.00	0.40			
39	B	694651.09	738772.87	6.00	164.00	0.00	0.00	0.40			
40	B	694648.70	738754.43	6.00	171.00	0.00	0.00	0.40			
41	B	694646.10	738741.48	6.00	170.00	0.00	0.00	0.40			
42	I	694607.95	738788.64	6.00	348.00	0.00	0.00	0.40			
43	J	694679.82	738608.90	10.00	168.00	5.00	0.00	2.00			
44	J	694674.31	738565.09	10.00	182.00	5.00	0.00	2.00			

# Horizontal Illuminance (lux)

Grid 1

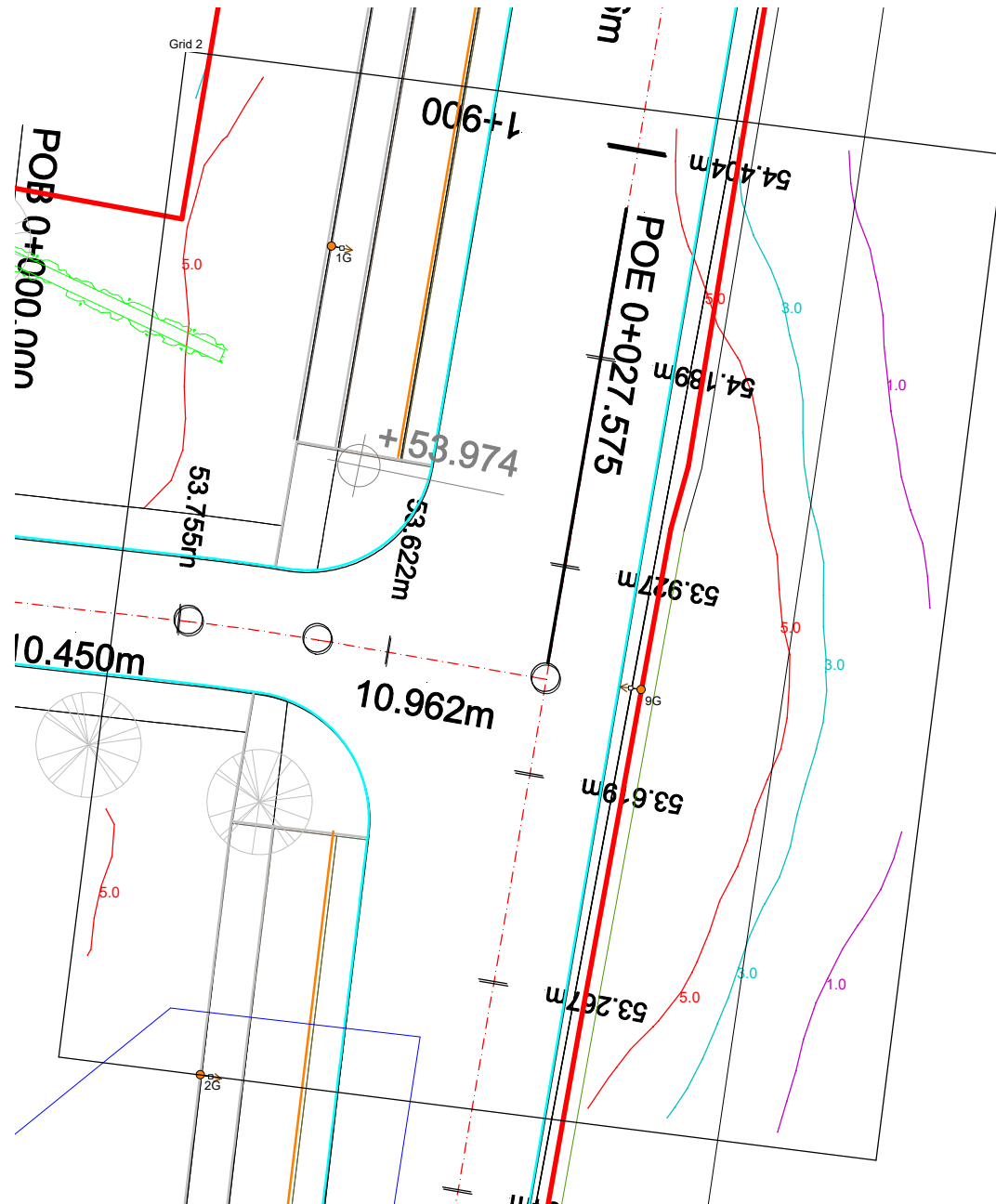


## Results

Eav	13.13
Emin	2.65
Emax	34.54
Emin/Emax	0.08
Emin/Eav	0.20

## Horizontal Illuminance (lux)

Grid 2



### Results

Eav	18.22
Emin	7.22
Emax	25.37
Emin/Emax	0.28
Emin/Eav	0.40

# Horizontal Illuminance (lux)

Grid 3



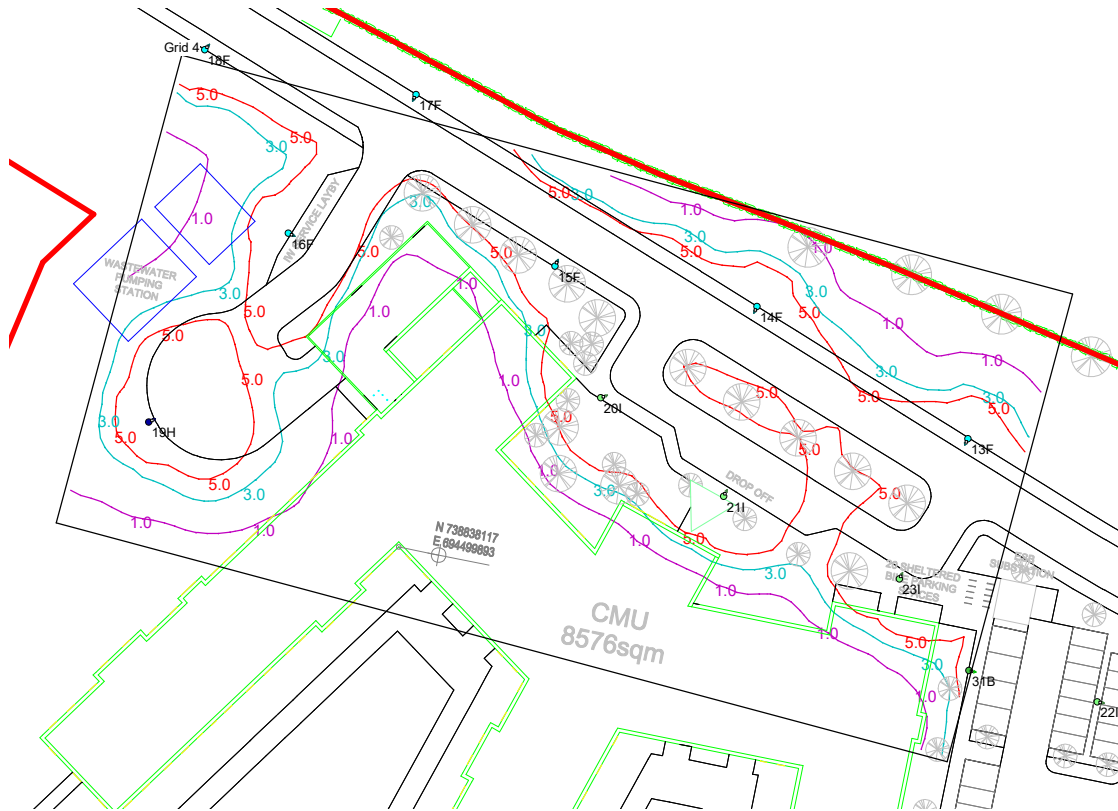
## Results

Eav	11.92
Emin	2.94
Emax	23.52
Emin/Emax	0.12
Emin/Eav	0.25



# Horizontal Illuminance (lux)

Grid 4

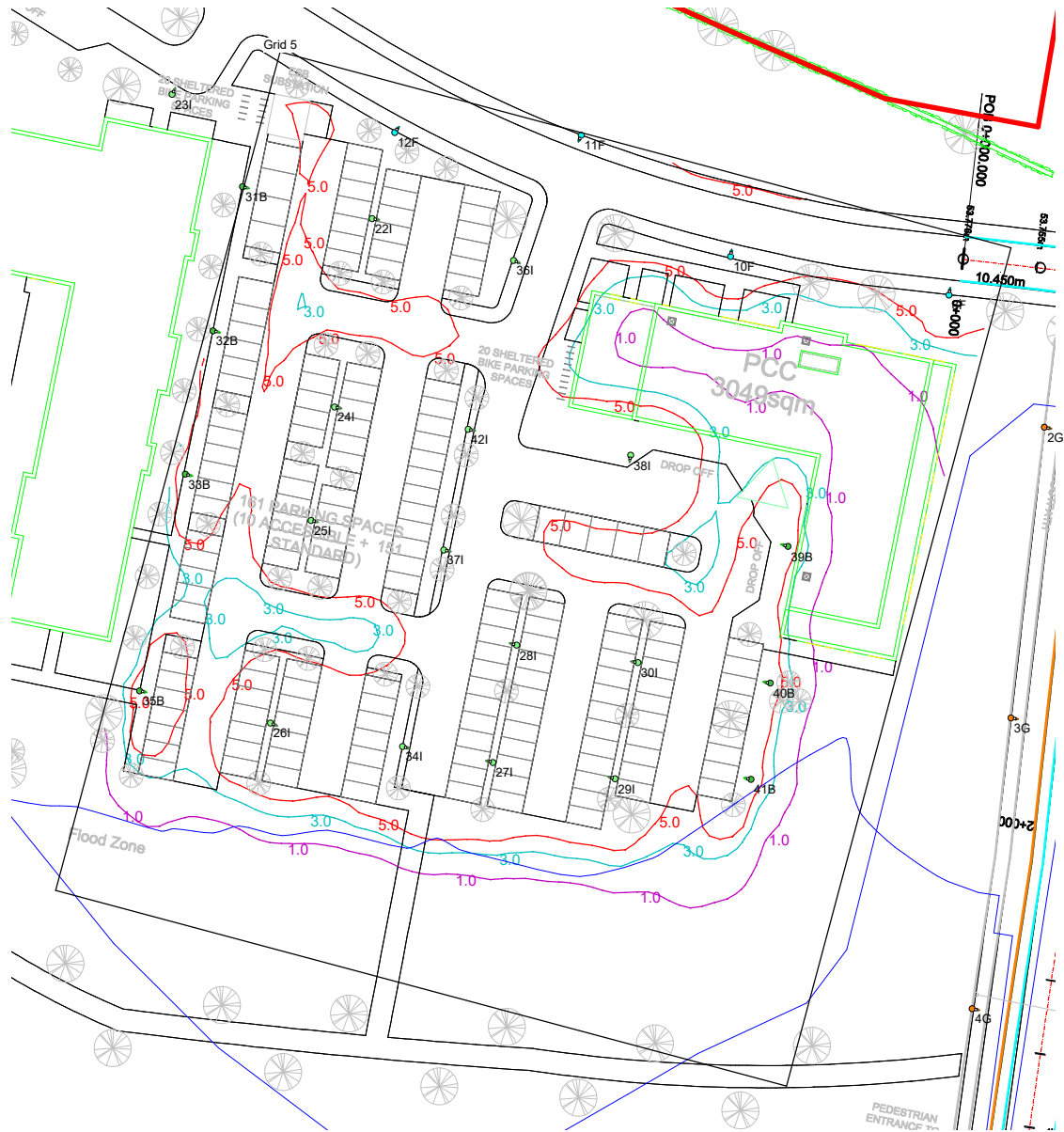


## Results

Eav	7.54
Emin	1.50
Emax	21.90
Emin/Emax	0.07
Emin/Eav	0.20

# Horizontal Illuminance (lux)

Grid 5



### Results

Eav	7.77
Emin	1.93
Emax	17.22
Emin/Emax	0.11
Emin/Eav	0.25